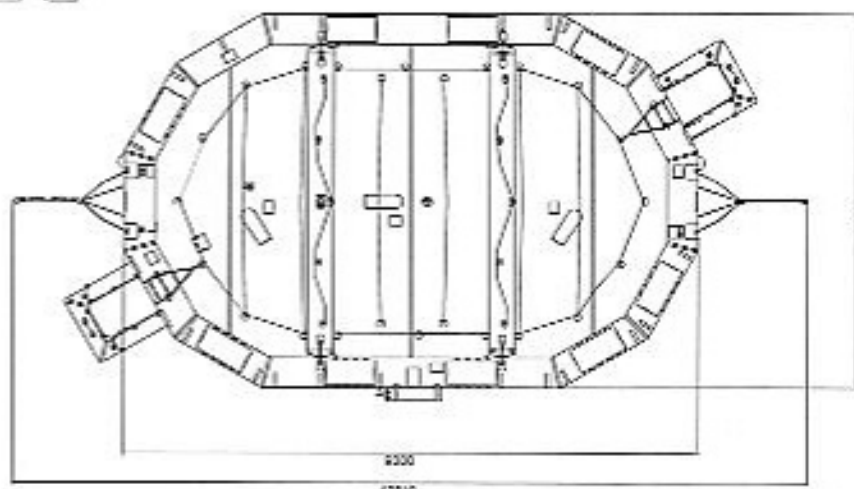
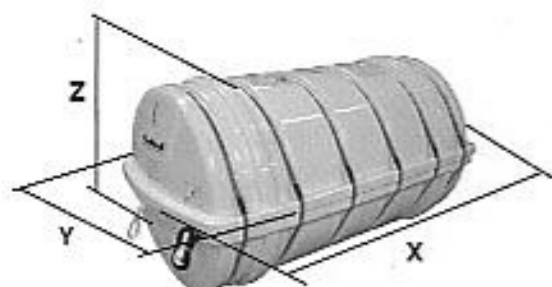
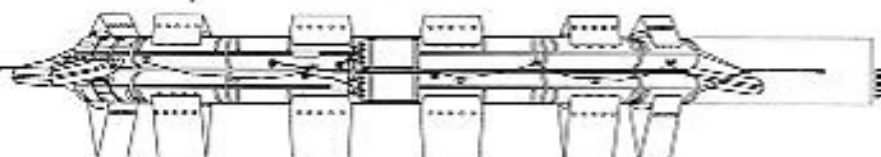




ZODIAC

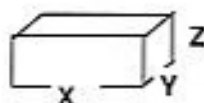
MARINE SOLAS SECTOR

HSC / RINA 100 MAN OPEN REVERSIBLE INFLATABLE LIFERAFT ROUND CONTAINER



TECHNICAL INFORMATION

100 MAN	HSC PACK / RINA PACK		
Container	N18		
Dimensions	X: 1560 mm	Y: 852 mm	Z: 835 mm
	X: 5' 1,42"	Y: 2' 9,55"	Z: 2' 8,88"
Liferaft Net Weight	330 kg / 728 pounds		
Max. height stowage	20 m / 66'		
Inflation Cylinder	4 x 20 liter		
Painter line length	20 m / 66'		



Crate

X: 1645 mm	Y: 940 mm	Z: 1050 mm
X: 5' 4,77"	Y: 3' 1,01"	Z: 3' 5,34"
385 kg / 849 pounds		
1,624 m ³ / 57,34 cubic foot		

Towing force	2 knots	3 knots
Without sea anchor	220 daN	420 daN
With sea anchor	240 daN	480 daN

Approvals:

EC (MED)

100 HSC_RINA cont rond Zodiac 19092006 KLT.doc

ISSUE : 1

Date: 19/09/2006

Dimensions and weight +/- 5%

Zodiac reserves the right to change specification without notice.

For installation, add minimum +10mm for clearance to dimensions of the container.

ZODIAC INTERNATIONAL - 2, Rue Maurice Mallet - 92130 Issy les Moulineaux - France

Email : solassales@zodiac.com

Phone : +33 (0)1 41 23 23 23

Fax : +33 (0)1 41 23 23 98

www.zodiacsolas.com